

Prestige 724

G.shdsl CSU/DSU



ZyXEL's Prestige 724 G.shdsl CSU/DSU is designed to provide high-speed Internet service for small to medium-sized businesses by replacing T1/E1 with SHDSL. The Prestige 724 preserves the customer's investment by using existing network architecture. The Prestige 724 provides business customers with a cost-effective alternative to traditional leased lines. The Prestige 724 follows ITU G.991.2 standards and is interoperable with all of the major vendors' G.shdsl solutions. By utilizing the ZyNOS, ZyXEL's Networking OS, the Prestige 724 delivers a complete network connection and multiple functions together with the quality you've come to expect from ZyXEL.

Benefits

Cost-effective Solution for Migration from T1/E1 Services

The Prestige 724 enables companies in the SOHO environment to easily switch from expensive leased-line service to SHDSL service without compromising the existing LAN architecture.

Multi-protocol Support

The Prestige 724 supports FRF.5 and FRF.8 Frame Relay-to-ATM Networking standards. With support of both ATM and Frame Relay network access protocols, the Prestige 724 make it easy to migrate to ATM access while preserving the internal Frame Relay network.

Easy Installation and Management

The Prestige 724 provides a menu-driven interface for configuration and monitoring. The interface is available directly via the console or remotely over the WAN using telnet.

Features

SHDSL compliance

- SHDSL (TC-PAM Line Code) ITU G.991.2 Standard
- Automatic or manual rate adaption from 144 to 2312Kbps
- Support ANSI (ANNEX A) and ETSI (ANNEX B)
- Server/Client mode selectable

ATM Support

- RFC 1483 "Multiple Protocol over AAL5"
- RFC 2364 "PPP over AAL5"
- Support 12 PVCs
- UNI 3.1 PVC
- F4/F5 loopback, AIS and RDI OAM cells

Frame Relay Support

- FRF.8 "Frame Relay/ATM PVC Service Interworking Implementation Agreement"
- FRF.5 "Frame Relay/ATM Network Interworking Implementation Agreement"
- RFC 1490 "Multiple Protocol over Frame Relay"
- RFC 1973 "PPP over Frame Relay"

Management Support

- Menu-driven user interface for easy network management
- Remote Telnet, and FTP firmware upgrade

Specifications

Physical Interface

- One RJ-11 port for G.shdsl connection
- One DB-25F for V.35/X.21 Data Port
- One DB-9F RS-232 Console for local configuration and management

Dimension

- 230(W)x161(D)x35(H) mm
- Weight: 468 g

Power Requirement

- AC input voltage: 100 to 120 VAC, 200 to 240 VAC
- Frequency ± 3 Hz
- Power consumption ≤ 10 W

Operating Environment

- Temperature: 0°C to 50°C
- Humidity: 20 % to 90 % (non-condensing)

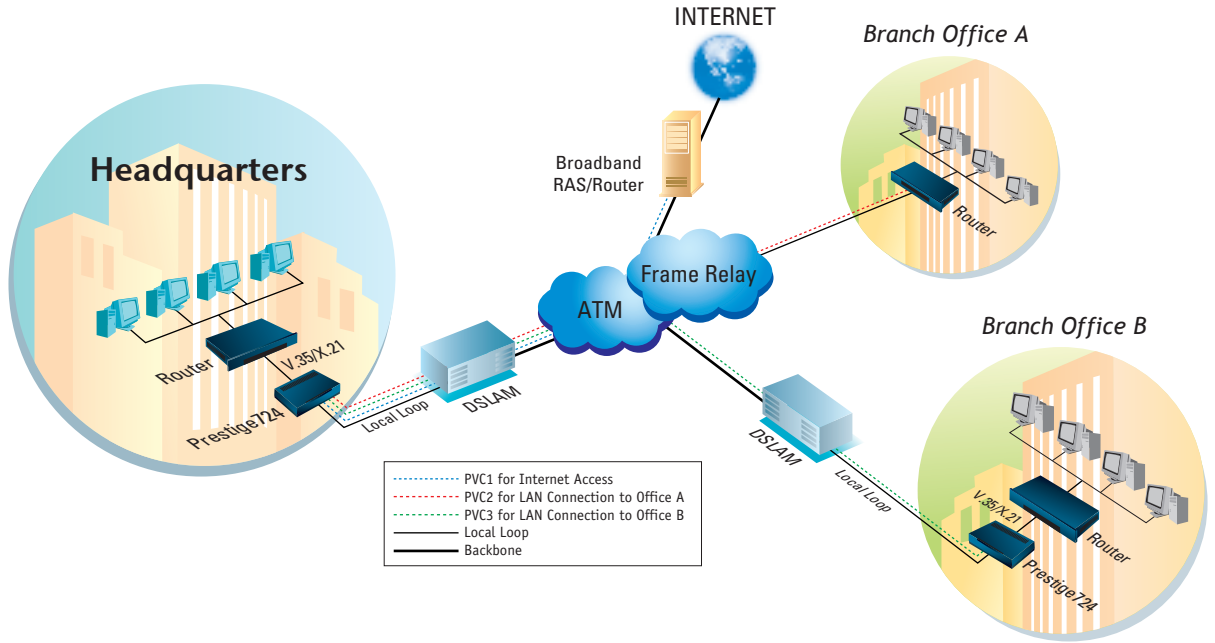
Optional Cables Available for Purchase

- V.35 cable: RS 530 DB-25 (M) to V.35 (F), 100 cm
- X.21 cable: RS 530 DB-25 (M) to X.21 (F), 100 cm

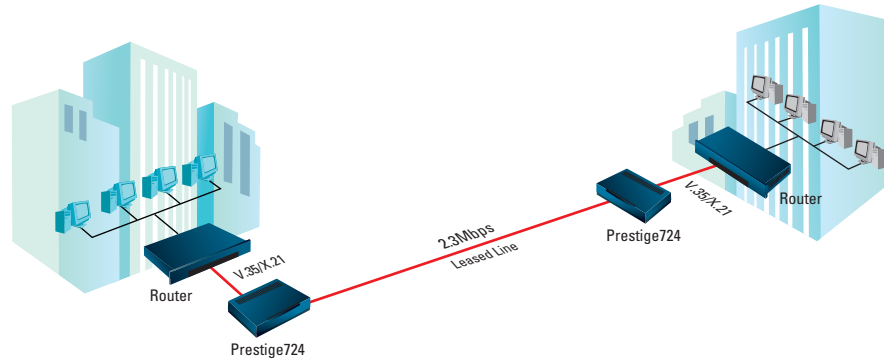
2-Year Warranty

Application Diagram

Internet Access and LAN-to-LAN Connection



Back-to-Back Application



Prestige 724 Rear Panel



ZyXEL
TOTAL INTERNET ACCESS SOLUTION

Corporate Headquarters
ZyXEL Communications Co.
Tel: +886-3-578-3942
Fax: +886-3-578-2439
Email: sales@zyxel.com.tw
http://www.zyxel.com
http://www.zyxel.com.tw

North America
ZyXEL Communications Inc.
Tel: +1-714-632-0882
Fax: +1-714-632-0858
Email: sales@zyxel.com
http://www.zyxel.com

Germany
ZyXEL Deutschland GmbH.
Tel: +49 2405 6909 0
Fax: +49 2405 6909 99
Email: sales@zyxel.de
http://www.zyxel.de

Denmark
ZyXEL Communications A/S
Tel: +45 39 55 07 00
Fax: +45 39 55 07 07
Email: sales@zyxel.dk
http://www.zyxel.dk

Norway
ZyXEL Communications A/S
Tel: +47 22 80 61 80
Fax: +47 22 80 61 81
Email: sales@zyxel.no
http://www.zyxel.no

Sweden
ZyXEL Communications A/S
Tel: +46 (0) 31 744 3810
Fax: +46 (0) 31 744 3811
Email: sales@zyxel.se
http://www.zyxel.se